



## 32V 5A-15A Automotive Micro Fuse Blade Type 3-Pin Terminal Automotive Fuse

Our Product Introduction

for more products please visit us on [lk-thermistor.com](http://lk-thermistor.com)

### Basic Information

- Place of Origin: China
- Brand Name: LINKUN
- Certification: ROHS
- Model Number: ANK
- Minimum Order Quantity: 1000PCS
- Price: Negotiate
- Packaging Details: 1000PCS/Bag
- Delivery Time: 6-10 days
- Payment Terms: T/T, Western Union,
- Supply Ability: 100,000 0pieces/month



### Product Specification

- Rated Voltage: 32V DC
- Metal: Zinc Alloy
- Rated Current: 5A-15A
- Type: Micro 3 Blade Fuse
- Body: PA Nylon66
- Breaking Capacity: Low
- Usage: Automotive
- Operating Temperature: -45°C~+125°C
- Packing: Bulk, Plastic Bag
- High Light: 15A Automotive Micro Fuses, 32VDC  
Automotive Micro Fuses, 15A Micro 3 Blade Fuse
- Highlight: 32V Automotive Micro Fuse,  
3 Pin Terminal Automotive Micro Fuse



### More Images



## Product Description

### Product Description:

**Automobile Plug-in 3 Terminal Tiny Legs Micro3 Automotive Micro 3 Car Fuses Blade Fuse**

### Specifications of Micro 3 Blade Fuse

- 1: Current: 5A-15A, Voltage: 32VDC
- 2: Material: Zinc Alloy, PA66
- 3: Interrupting Ratings: 1000A@32VDC
- 4: Design Complies With : SAE2741, ISO8820-3
- 5: Ambient Temp.: -45°C~+125°C
- 6: Certification: ROHS
7. Package: 100pcs Per Bag
8. Applications: Automotive
9. Rating Marking : Hot Stamping


### Tiny 3( Micro3) Blade Fuse




Current	5A-15A
Voltage	32VDC
Material	Zinc Alloy, PA66
Interrupting Ratings	1000A@32VDC
Design Complies With	SAE2741, ISO8820-3
Ambient Temp	-45°C~+125°C
Certification	ROHS
Package	1000pcs Per Bag
Applications	Automotive
Rating Marking	Hot Stamping

### Time Characteristics of 3 Terminal Blade Fuse

% Of Rated Current	Min Hold Time	Max Hold Time
110%	100h	
135%	750ms	120s
160%	300ms	50s
200%	150ms	5s
350%	40ms	500ms
600%	20ms	100ms

### Specification Of Micro3 Blade Auto Fuse

Part Number	Amperage	Body Color
ANK-5A	5A	

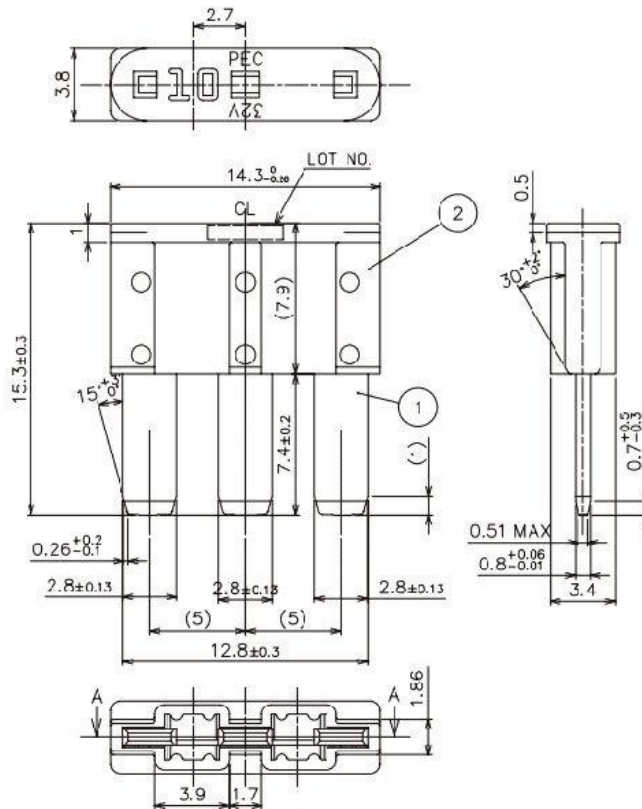
ANK-7.5A	7.5A	
ANK-10A	10A	
ANK-15A	15A	



### AUTO FUSE



## AUTO FUSE



### Car Fuse - Product Overview

#### Introduction

The Car Fuse is an essential component in the electrical system of any vehicle. It is designed to protect the electrical circuits from overloading and short-circuiting, ensuring the safety and proper functioning of the vehicle.

#### Product Description

The Car Fuse is a type of automotive fuse that is specifically designed for use in cars. It comes in various sizes and ratings, but the standard size is the Middle Medium size. The voltage rating for this fuse is 32 volts and the rated current ranges from 20A to 120A.

#### Standards

The Car Fuse conforms to the standards set by the Society of Automotive Engineers (SAE) J1888. This ensures that the fuse is of high quality and meets the safety requirements for use in vehicles.

#### Features

The Car Fuse is made of high-quality materials, with the body being made of either PC (polycarbonate) or PA (polyamide). This makes the fuse durable and able to withstand high temperatures. It is also designed to have a low profile, making it suitable for use in tight spaces.

#### Types and Ratings

The Car Fuse comes in different types, such as ATU, ATO, ATC, and ATY, to cater to the different needs of various vehicles. It also has a mini blade fuse option for smaller vehicles. Additionally, the fuse is available in a range of ratings, from 5A to 150A, to accommodate different electrical circuits in a car.

#### Advantages

The Car Fuse has several advantages over other fuses in the market. Its high-temperature resistance makes it suitable for use in hot

environments, such as the engine compartment. It also has a quick response time, ensuring that the circuit is protected from any damage in case of a short circuit.

Cost and Availability

The Car Fuse is competitively priced and readily available in the market. Customers can get the best price for this product by comparing prices from different suppliers. It is also easily replaceable, making it a cost-effective solution for any vehicle's electrical system.

Conclusion

The Car Fuse is an essential component in any vehicle's electrical system, providing protection and ensuring the smooth functioning of the vehicle. With its high-quality materials, conforming to SAE standards, and various types and ratings, the Car Fuse is the ideal choice for any car owner.

Voltage Rating	32 Volts
Rated Current	20A-120A
Standards	SAE J1888
Rated Voltage	32V DC
Body	PC/PA

Get the best price for your Car Fuse today!

Features:

Product Name: Car Fuse  
Voltage Rating: 32 Volts  
Standards: According to SAE J1888  
Terminal Type: Blade  
Breaking Capacity: Low  
Usage: Automotive

Technical Parameters:

Property	Value
Product Name	Car Fuse
Size	29.3x34.1x8.8mm
Rated Current	20A-120A
Breaking Capacity	Low
Voltage Rating	32 Volts
Body	PC/PA
Metal	Zinc Alloy
Standards	According To SAE J1888
Shape	Blade Type
Terminal Type	Blade
Rated Voltage	32V DC
Keywords	Car Blade 40A Automotive Fuse Middle Medium Standard Size ATU ATO ATC ATY low profile mini blade fuse, ATT 32V DC 30 Amp Low Profile Micro Mini Blade Fuse Plug In PC PA Material, Blade Mounting 1A-40A 58V DC ATT Auto Blade Fuse 40A Automotive Fuse Car Low Profile Blade Fuse

Applications:

Car Fuse - LINKUN  
Brand Name: LINKUN

Model Number: ATM

Place of Origin: China

Terminal Type: Blade

Body: PC/PA

Size: 29.3x34.1x8.8mm

Usage: Automotive

Rated Voltage: 32V DC

Product Description

The LINKUN Car Fuse is a high-quality automotive fuse designed for use in various vehicles. It is a small and compact fuse that is perfect for use in tight spaces. The fuse is made from durable materials and is designed to provide reliable protection for your vehicle's electrical system.

Application and Scene

The LINKUN Car Fuse is ideal for use in a variety of automotive applications. It is commonly used in cars, trucks, motorcycles, and other vehicles to protect the electrical system from overloading or short circuits. It is also suitable for use in industrial and commercial vehicles, such as construction equipment and farm machinery.

The Car Fuse is essential for the safe and efficient operation of your vehicle. It is designed to protect sensitive electrical components from damage caused by power surges and overloading. Whether you are driving on the highway or off-road, the Car Fuse will provide reliable protection for your vehicle's electrical system.

Product Attributes

Brand Name: LINKUN

Model Number: ATM

Place of Origin: China

Terminal Type: Blade

Body: PC/PA

Size: 29.3x34.1x8.8mm

Usage: Automotive

Rated Voltage: 32V DC

Key Features

5A-15A Automotive Micro Fuses

Plug In 3 Terminal Tiny Blade Legs

Blade Mounting

1A-40A 58V DC ATT Auto Blade Fuse

40A Automotive Fuse

Car Low Profile Blade Fuse

150A Automotive Micro Fuses

Electrical Fuse Automotive

Tiny Blade Fuses

Why Choose LINKUN Car Fuse?

The LINKUN Car Fuse stands out from other automotive fuses due to its high-quality materials and superior design. Its key features make it a reliable and efficient choice for protecting your vehicle's electrical system. The tiny blade legs make it easy to install, and the blade mounting allows for a secure fit. The low profile design also makes it ideal for use in tight spaces. The Car Fuse is also available in a wide range of sizes and ratings, making it suitable for various vehicle types and applications.

Conclusion

The LINKUN Car Fuse is a must-have for any vehicle owner. It offers reliable protection for your vehicle's electrical system and ensures the safe and efficient operation of your vehicle. With its high-quality materials, superior design, and a wide range of sizes and ratings, the Car Fuse is the perfect choice for all your automotive fuse needs. Choose LINKUN and experience the difference in performance and reliability!

## Customization:

LINKUN Customized Service for Car Fuse

Brand Name: LINKUN

Model Number: ATM

Place of Origin: China

Terminal Type: Blade

Standards: According To SAE J1888

Voltage Rating: 32 Volts

Rated Current: 20A-120A

Breaking Capacity: Low

Key Features:

5A-30A ATA Car Micro 2 Blade Fuse

Nylon PA66 Housing

Long Leg for secure connection

150A Automotive Micro Fuses for heavy duty use  
5A 10A 15A 20A 30A 40A ATO ATC 32V DC LED Blade Fuse for various voltage needs  
With LED Indicator for easy identification of blown fuses  
High-quality materials for long-lasting durability  
Customized packaging and labeling options available  
Expert technical support and consultation for fuse selection  
Fast and efficient delivery to ensure timely production

### **Packing and Shipping:**

#### Car Fuse Packaging and Shipping

The Car Fuse packaging is designed to ensure safe and secure delivery of the product to our customers. Our packaging is made from sturdy and durable materials to protect the Car Fuse from any damage during shipping.

The Car Fuse is carefully wrapped in a protective layer and placed in a sturdy box with cushioning materials to prevent it from moving around during transit. The box is then sealed with strong tape to ensure that the product stays in place.

Our packaging also includes clear labeling with the product name, size, and any necessary safety warnings. This makes it easy for our customers to identify the product and handle it with care.

For shipping, we use reliable and trusted carriers to ensure timely and efficient delivery of the Car Fuse. We also offer different shipping options to accommodate the needs of our customers.

Rest assured that your Car Fuse will be delivered to you in excellent condition, ready to be used in your vehicle.



**Dongguan Linkun Electronic Technology Co., Ltd.**



13423305709



huangju@lk-ptc.com



lk-thermistor.com

Room 101, No. 21, Huayuanzai Road, Chongmei, Chashan Town, Dongguan City, Guangdong Province