



Ntc Thermistor Temperature Control Switch Water Temperature Sensor With Switch For Temperature Regulation

Our Product Introduction

for more products please visit us on lk-thermistor.com

Basic Information

- Place of Origin: Dongguan,Guangdong,China
- Brand Name: LINKUN
- Certification: CCC RoHS
- Model Number: Temperature Sensor
- Minimum Order Quantity: Negotiation
- Price: Negotiation
- Packaging Details: Packed in OPP Bag firstly,and then reinforced with Cartons for outer packing
- Delivery Time: 10-20 workdays
- Payment Terms: T/T, Western Union, MoneyGram
- Supply Ability: 100000



Product Specification

- Product Name: Water Dispenser Temperature Sensor
- Resistance: 12k Ohm
- B Value: 3740
- Switching Temperature: 95C±3C
- Withstand Voltage: AC1500V/60Sec Without Flashover Or Breakdown
- Insulation Resistance: DC500V/100M0 Or More
- B Tolerance: 1%, 2%,3%,5%
- Highlight: ntc 12k temperature sensor,
12k ntc thermistor temperature sensor,
ntc 12k ohm temperature sensor



More Images



Product Description

<http://www.lk-thermistor.com/>

Product Description:



Easy to use and install: This over-temperature control and water temperature sensor has a simple structure and does not require additional control equipment. It is directly connected to the product control system, providing a seamless and efficient user experience.

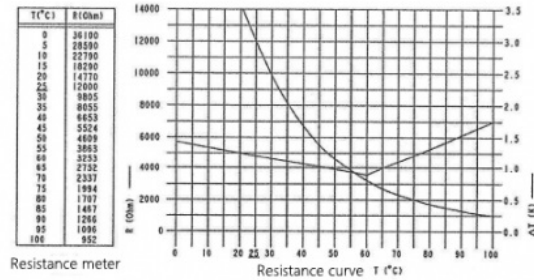
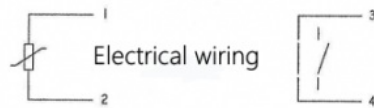
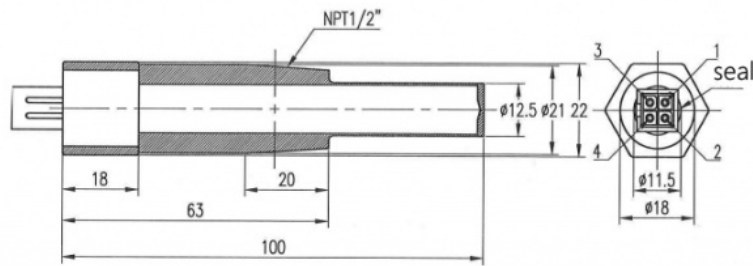
High-precision measurement and reliable data: The sensor uses advanced sensing technology to ensure high-precision measurement of water temperature, while timely controlling the temperature to achieve a double protection effect.

Safe and reliable operation: Equipped with overheating protection function, when the water temperature exceeds the safe range, the sensor will automatically trigger an alarm and power off, effectively ensuring the safety of the generator and surrounding equipment.

High durability and excellent performance: Made of high-quality stainless steel housing, the sensor has excellent durability, can operate stably for a long time, reduce maintenance costs and provide reliable performance.

Suitable for multi-functional product applications: The sensor is suitable for various water dispensers, boilers, and cars, providing flexible and practical solutions for different scales of needs, and providing more choices for various work needs.

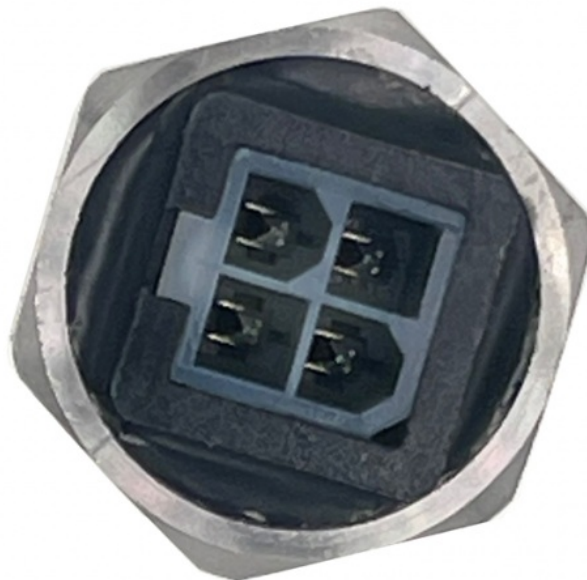
Product size drawing and product introduction



- Technical requirements:
1. Withstand voltage: AC1500V/60Sec without flashover or breakdown; Insulation resistance: DC500V/100MO or above;
 2. Connector head: Molex46993-0411 or Red Star 559-4PS; The connector and the stainless steel shell are not loose;
 3. XTC temperature sensor R25°C: 12K \pm 1%, B value (25°C/85°C) = 3740;
 4. Temperature switch: disconnect at the cut-off temperature (95 \pm 3)°C, rated value 30VDC, 2A, normally closed;
 5. Stainless steel material: 06Cr19Ni10;
 6. Able to withstand water pressure above 1.1MPa;
 7. Unmarked dimensional tolerances are in accordance with GB/T1804- π ; unmarked shape and position dimensional tolerances are in accordance with GB/T1184-K;
 8. The product appearance should be bright without visible burrs, damage, cracks, etc.

Product details display





Features:

NTC Sensor: NTC Temperature Sensor

B Tolerance: 1%, 2%, 3%, 5%

Spectrum Peaknm: 560

Dark Resistance: 2-3M Ω

Storage Temperature Range: -55°C To 150°C

Operating Current: 1mA

Technical Parameters:

B Tolerance	1%, 2%, 3%, 5%
Connector	PH-2Y
Dark Resistance	2-3MΩ
Terminals	Brass Tin Plated
Measuring The Dielectric	Temperature
Wire	PVC, Teflon, Enamel Insulation
Power	+3.0V -5.5V
Assembly	Insert Hole Or Lock
Spectrum Peaknm	560
Storage Temperature Range	-55°C To 150°C

Applications:

LINKUN's PT100 Temperature Sensor is a versatile NTC Sensor designed to meet a wide range of temperature sensing needs. With its high precision and reliability, this sensor is suitable for various application occasions and scenarios.

One common application scenario for the PT100 Temperature Sensor is in industrial settings. Its high B Tolerance options of 1%, 2%, 3%, and 5% make it ideal for industrial temperature monitoring, control, and regulation. Whether it's in manufacturing plants, warehouses, or production facilities, this sensor ensures accurate temperature measurements.

Another important application occasion for the PT100 Temperature Sensor is in the field of HVAC (Heating, Ventilation, and Air Conditioning). With its XLPE Black Cable for robustness and durability, this sensor can be used in HVAC systems for precise temperature control and energy efficiency.

Furthermore, the PT100 Temperature Sensor is well-suited for scientific and research purposes. Researchers and scientists can rely on its accurate temperature readings and stable performance for experiments, studies, and data collection.

Moreover, the PT100 Temperature Sensor's low max power consumption of 100nmw and wide operating voltage range of 3.3V to 5V make it suitable for battery-powered devices and electronic gadgets. Its PH-2Y connector ensures easy integration and compatibility with various electronic systems.

In conclusion, LINKUN's PT100 Temperature Sensor, originating from Dongguan, Guangdong, China, is a reliable NTC Sensor that can be applied in industrial, HVAC, scientific, and electronic settings. With its precision, durability, and versatility, this sensor is a valuable tool for temperature sensing in a wide range of scenarios.

Customization:

Customize your NTC Temperature Sensor product from LINKUN with the model number PT100. This high-quality sensor originates from Dongguan, Guangdong, China, ensuring reliable performance. The storage temperature range of -55°C to 150°C makes it suitable for various applications. The terminals are made of brass and tin plated for enhanced durability. Measuring the dielectric temperature accurately, this sensor comes with a PH-2Y connector and XLPE black cable for easy installation.

Support and Services:

The NTC Temperature Sensor product comes with comprehensive Product Technical Support and Services to ensure smooth operation and optimal performance. Our team of experts is available to provide assistance with installation, troubleshooting, and calibration of the sensor. Additionally, we offer product training sessions and maintenance services to help you get the most out of your NTC Temperature Sensor.



Dongguan Linkun Electronic Technology Co., Ltd.



13423305709



huangju@lk-ptc.com



lk-thermistor.com

Room 101, No. 21, Huayuanzai Road, Chongmei, Chashan Town, Dongguan City, Guangdong Province